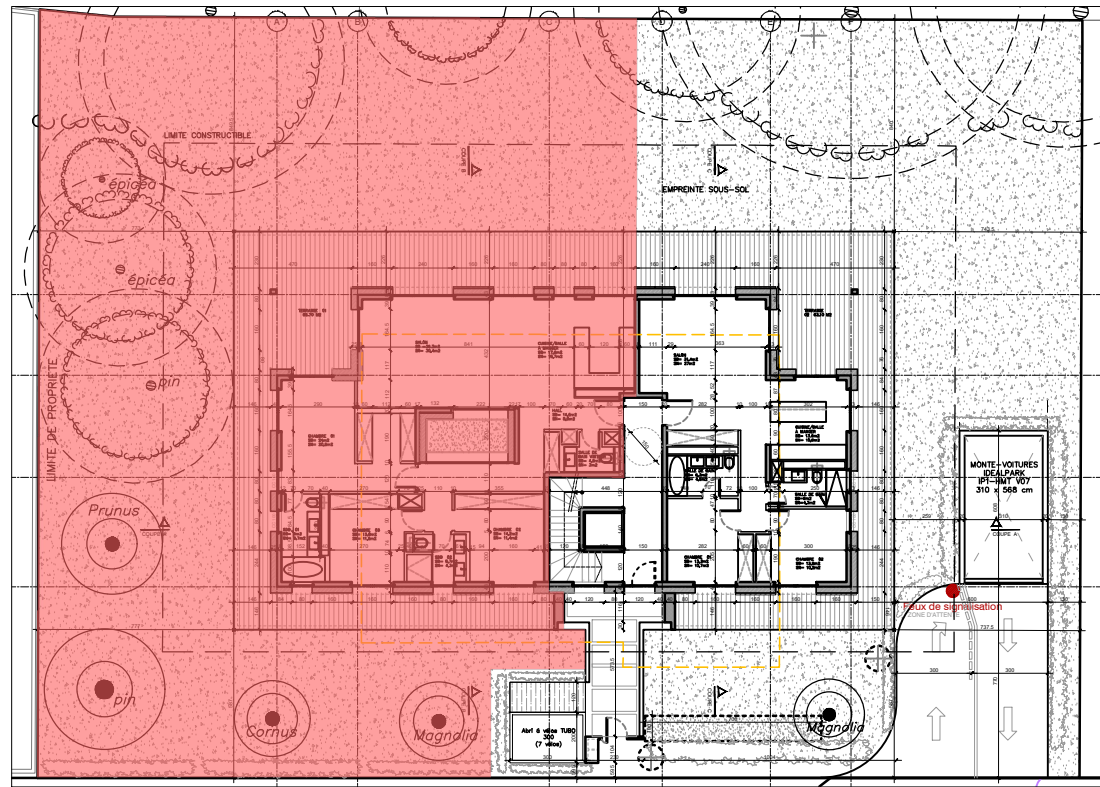


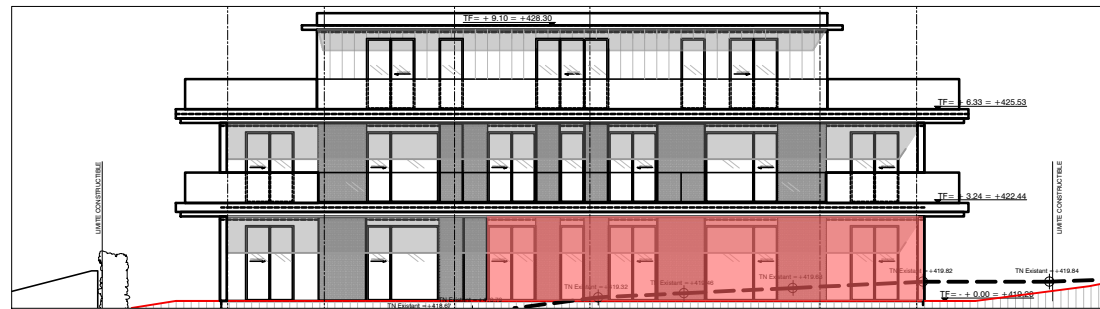
IMMEUBLE DE LOGEMENTS "CASABELLA"

Route de Thonon 73A, 1222 Collonge-Bellerive

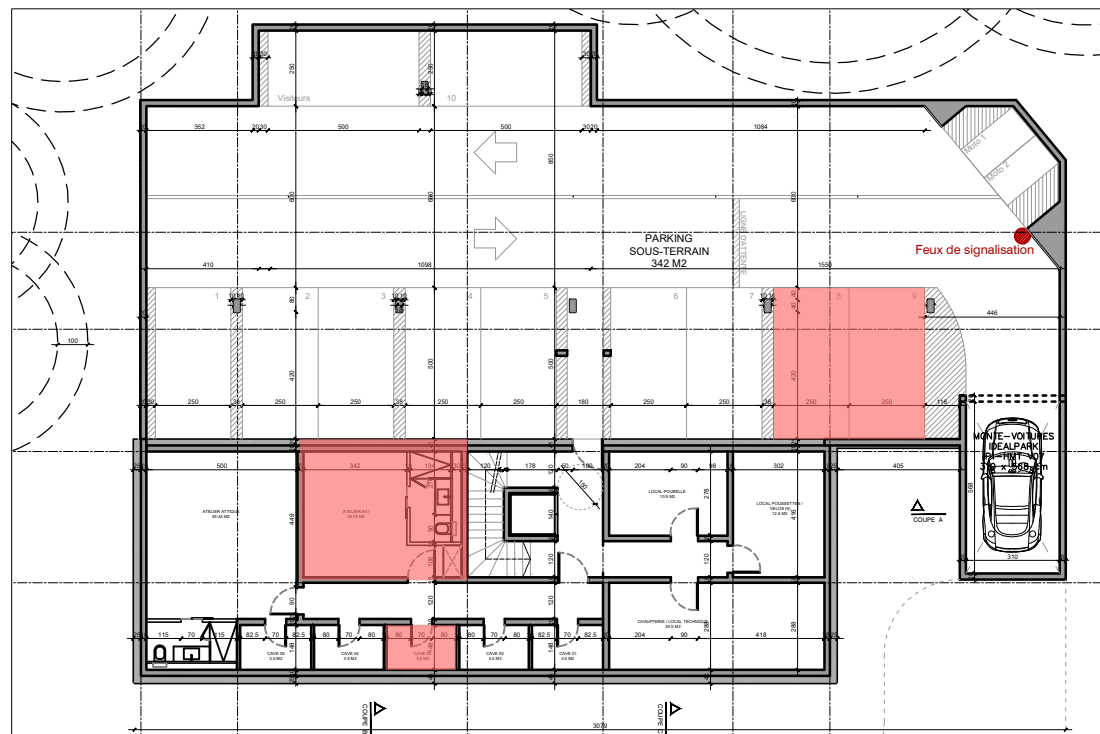
SITUATION ET JARDIN



ELEVATION



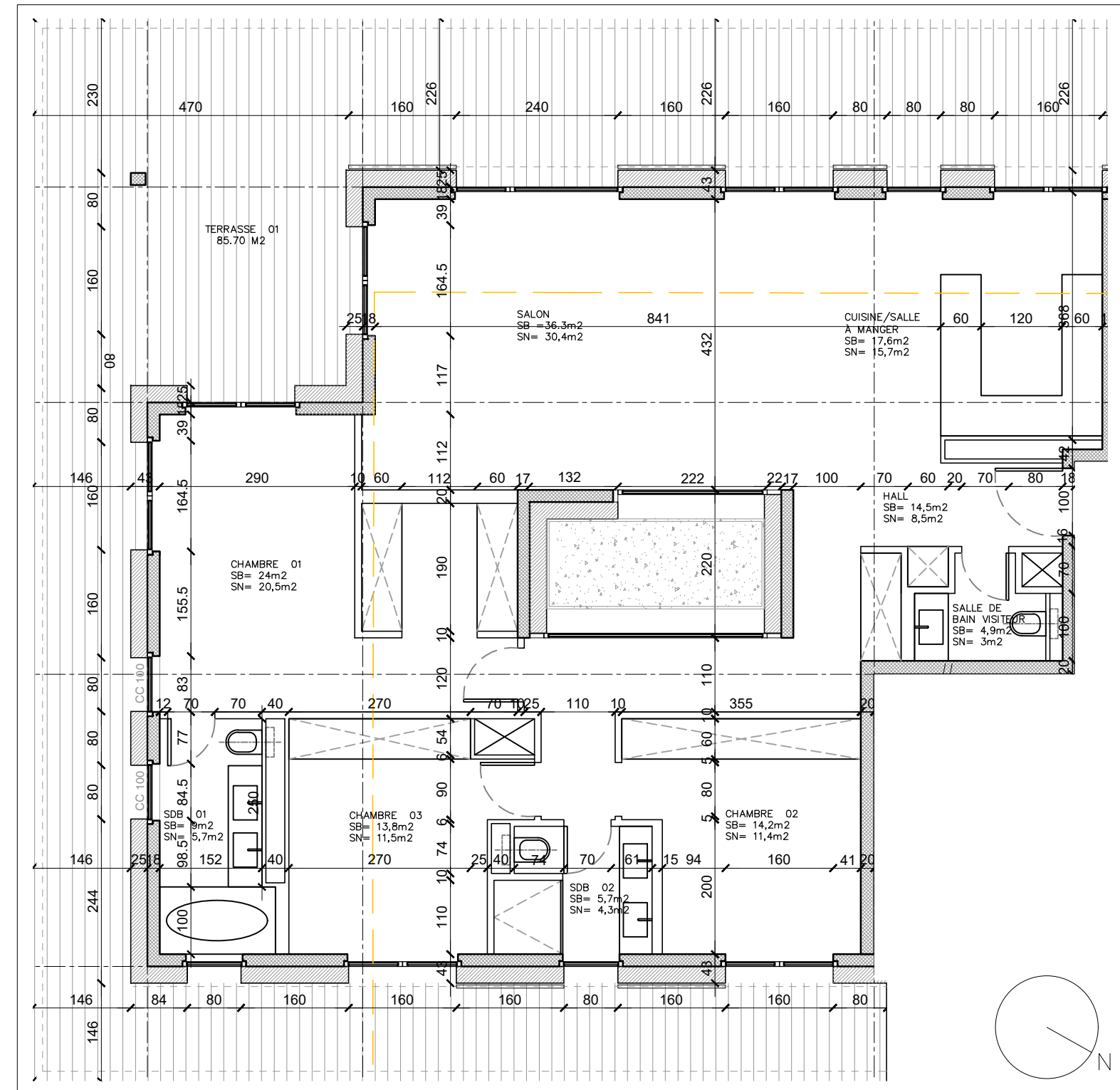
SOUS-SOL ET PARKING



LOGEMENT A 01

Surface Brute = 147 m²
 Terrasse = 83 m²
 Jardin = 436 m²

Parking N° = 8, 9
 Cave N° = 3(1.05)
 Atelier N° = 2 3 m 2



OBJET: Construction d'un habitat groupé (HPE) de 5 logements avec parking souterrain
 ADRESSE: Route de Thonon 73A, 1222 Collonge-Bellerive
 PROPRIETAIRES: DF INVEST SA, P.PROPERTIES SA
 PLAN DE:

DATE: 26.09.2019

ECHELLE: 1/80

N.PLAN: A01

VENTE

NEAL YMAR
 ARCHITECTES

RUE ROUSSEAU 5, 1201 GENEVE
 +41 (0)22 301 21 21
 INFO@NEALYMAR.COM
 WWW.NEALYMAR.CH